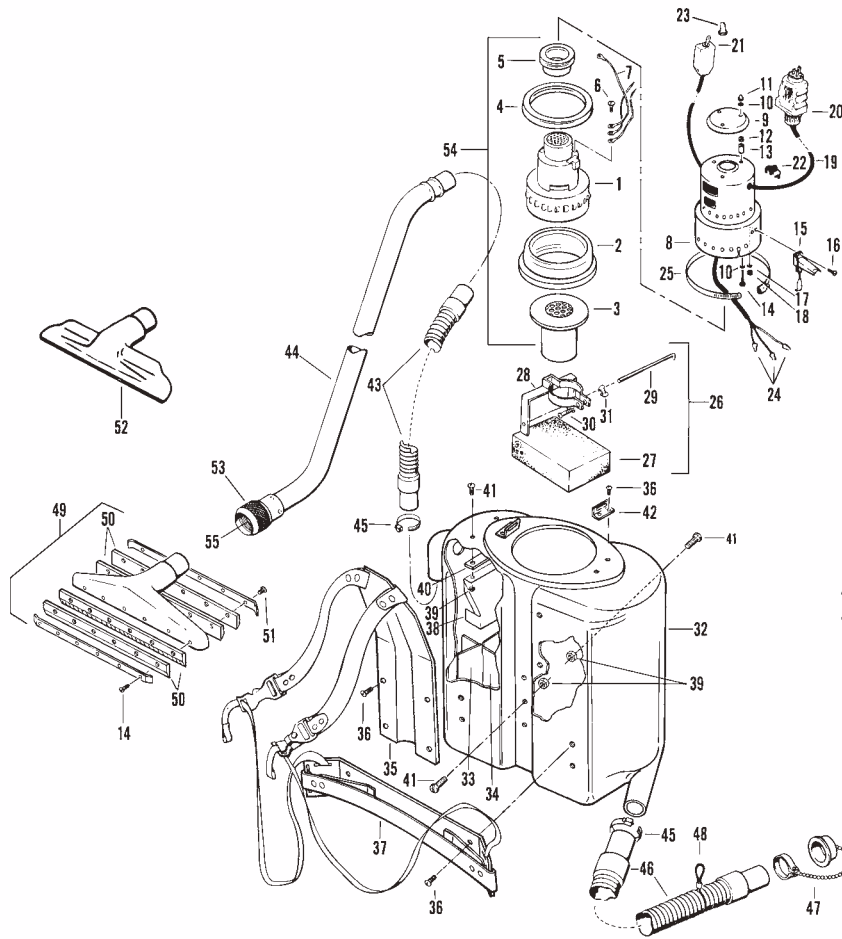


Salvage-Master®



**Your
Fire Departments
Best
Public Relations
Tool**

Part	Description	Price	Part	Description	Price
970200	Salvage-Master®	1425.00	31	81809 Wing Nut #10-32	1.50
1	970242 Motor	255.00	970217	Tank Assy. (Incl. #'s 32 - 42)	391.00
2	970004 Motor Gasket, Lower	44.40	32	970244 Tank	172.00
3	970015 Flange & Screen Assy.	24.10	33	970247 Splash Baffle (2 req.) ¹	14.00
4	970230 Motor Gasket, Upper	30.60	970209	Splash Baffle (2 req.) ²	11.70
5	970241 Air Intake Gasket	6.80	34	970249 Partition Baffle (2 req.)	10.00
6	832002 Screw, #10 x 9/16"	1.50	35	970219 Upper Bracket Assy. (Order w/Lower Bracket Assy., #37)	73.50
7	Deleted		36	955049 Screw, #10-24 x 5/16" (12 req.)	1.30
8	970009 Motor Housing	105.00	37	970218 Lower Bracket Assy. (Order w/Upper Bracket Assy., #35)	60.00
9	970011 Air Intake Cover	19.00	38	970202 Tank Baffle	40.80
10	956604 Lock Washer #8 (6 req.) ¹	0.90	39	956030 Nut (2 req.)	0.90
11	940106 Acorn Nut #8-32 (3 req.)	1.20	40	970207 Gasket	2.90
12	956029 Nut, Plain, #8-32 (3 req.)	1.30	41	955053 Screw #10-24 x 5/8" (2 req.)	1.30
13	970080 Spacer (3 req.)	2.40	42	970206 Motor Clip (2 req.)	10.00
14	955037 Screw, #8-32 (3 req.)	1.30	43	970215 Intake Hose (44 inches)	46.40
15	970014 Catch (2 req.)	18.50	44	970032 Wand Assy. (Incl. #'s 53 & 55)	96.00
16	955016 Screw, #6 x 1/4" (4 req.)	1.30	45	970240 Clamp (2 req.)	2.90
17	956603 Lock Washer #6 (4 req.)	0.90	46	970216 Disposal Hose (26.25 inches)	44.10
18	956028 Nut, Plain, #6-32 (4 req.)	1.30	47	970040 Cap Assy.	23.00
19	970086 Wire Assy.	96.00	48	970064 Hose Retainer Assy.	3.00
20	970085 GFI	197.00	49	970033 Squeegee Assy.	100.00
21	970256 Switch Assy.	133.00	50	970034 Rubbers (Set of 4)	58.00
22	970243 Strain Relief Bushing	2.10	51	955037 Screw, #8-32 x 5/8" (12 req.) ¹	1.30
23	970022 Toggle Boot	8.40	52	970052 Carpet Adapter (Optional)	75.00
24	970006 Connector (3 req.)	2.40	53	970036 Nut, Plastic	20.00
25	970013 Clamp	6.60	54	970246 Motor Assy. (contains #'s 1 - 25)	744.00
26	970237 Bracket & Float Assy. (Contains #'s 27 - 31)	69.10	55	970035 Snap Assy. (Old Model with metal nut)	2.70
27	970208 Float	16.80	970220	Disposal Hose Assy. (contains #'s 46 - 48)	50.50
28	970205 Bracket	47.10			
29	970222 Retainer Wire	9.00			
30	833019 Screw, #10	1.30			

Legend

- ¹ Used on units made after 10/1/75.
- ² Used on units made before 10/1/75.